

IMAGINE BRIGHTER FUTURES



ABILITY^Y KC[®]

2024 ANNUAL REPORT



A note from the CEO and Executive Director

At Ability KC, we embody the power of possibility every day. Imagine a place where care isn't fragmented, where individuals of all ages and medical complexities receive comprehensive quality of life support. That vision drives our work, and it's what we deliver every day.

As a regional center of excellence and a nationally recognized leader in specialized rehabilitation, education, and therapies, our model is innovative. By integrating intensive services we deliver better outcomes, reduce challenges, and save time and money for our communities. Imagine the relief of not having to travel across cities for care. Imagine the power of continuity, expertise, connection, and compassion.

From the very first conversation, each individual is at the heart of our experience. Our "why" is simple and profound: building brighter futures. For those we serve, their families and caregivers, and our dedicated team, this purpose drives everything we do. We are experts, educators, navigators problem solvers, and connectors, because it takes a community to deliver this unique model of care.

Imagine therapies that go beyond what insurance typically covers, made possible by our community partners and generosity. Our specialized programs are led by passionate professionals who are shaping best practices and leading innovation.

In 2024, we served over 3,200 individuals spanning across all ages, health complexities, and conditions. Our model consistently decreases rehospitalization, ensures continuity with physicians and specialists, supports school readiness from kindergarten to college, and helps individuals return to work or find new employment. Imagine the difference that makes, not just for one person, but for entire families and communities.

Without Ability KC, many would face immense barriers. With Ability KC, they imagine and achieve independence, education, employment, and a better quality of life.

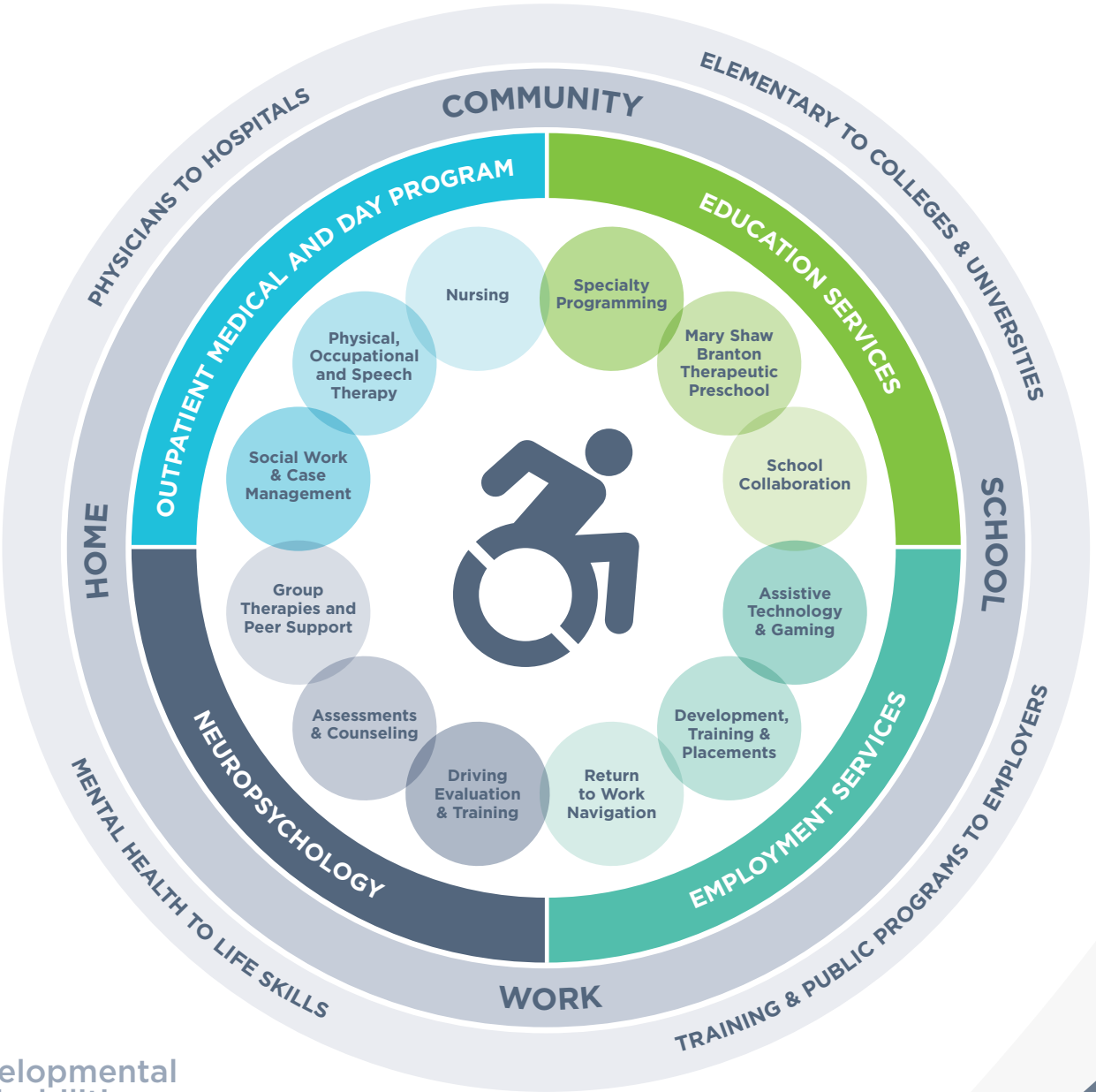
We are honored to work with individuals of all abilities on their journey of recovery and life transitions. And we are deeply grateful to our partners, volunteers, and supporters who make this work possible. Together, we will continue to meet the evolving needs of our communities and expand access to care, opportunities, and hope.

Imagine what we can do next. Together.

Amy Castillo
CEO and Executive Director

What we do

Building brighter futures, helping people get back to independence at home, work, school and communities.



developmental disabilities
stroke cancer
mental health **brain injury**
spinal cord injury autism
rare genetic **amputation** trauma
dementia/memory



ACCREDITED

CARF Accreditation: A Legacy of Excellence

For more than 50 years, Ability KC has upheld the highest standards in rehabilitation and human services, validated by our long-standing Commission on Accreditation of Rehabilitation Facilities (CARF) accreditation. CARF sets internationally recognized benchmarks for quality and outcomes. Earning a Three-Year Accreditation reflects our commitment to continuous improvement, accountability, and exceptional care.



“A palpable sense of commitment to the persons served is evident upon entering Ability KC. Leadership and staff are highly skilled, creative, and passionate about maximizing function and helping individuals to successfully function in their homes and integrate into their communities.”
-CARF Surveyor



SINCE 1974


15

CARF-ACCREDITED PROGRAMS

Navigating Health Complexity



At Ability KC, we provide specialized care for individuals with significant medical complexity. Our nursing team delivers expert clinical oversight, medication management, and care coordination ensuring safety, stability, and continuity across therapies. Through integrated support, we help individuals achieve goals, independence, and improved quality of life.



Learn about Myra and Everett's story



Empowering Transitions, Supporting Independence

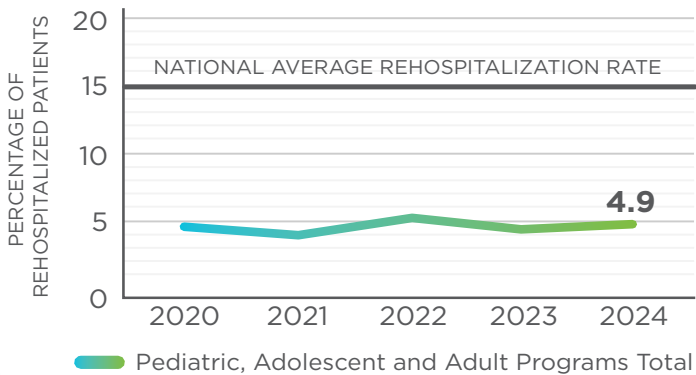
Ability KC provides comprehensive care that supports individuals through life's key transitions—from early development to adulthood, recovery to reintegration. Our programs are designed to foster community independence at every stage, adapting to the evolving needs of each person we serve. Whether preparing for school, returning to work, or rebuilding after injury, we walk alongside every journey. With a continuum of support across all ages and stages, Ability KC ensures that progress is always possible—and independence is always within reach.



Learn about Bernie's story

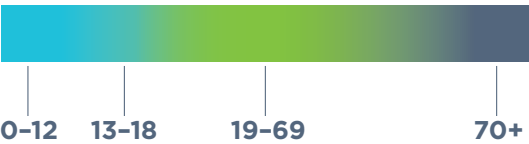


Lowering Hospitalizations



At Ability KC, our model of care and services supports recovery. Insurance caps often limit access to essential outpatient care, increasing the risk of rehospitalization and long-term costs. We continue to advocate for care and support that is cost-effective and life changing.

IGNITING INDEPENDENCE ACROSS ALL AGES AND STAGES OF LIFE



Thank you to our generous donors and partners.

Together, we make it possible.

\$100,000+

Missouri Department of
Elementary and Secondary
Education
The Rehabilitation Institute
Foundation
Victor E. Speas Foundation,
Bank of America, N.A., Trustee
United Way of Greater
Kansas City

\$50,000-\$99,999

William Ferdie Bradley, Jr.
Foundation
Robert & Amy Dunn
Sally Ann Firestone Foundation
Irven E. & NeVada P. Linscomb
Foundation Fund
The Research Foundation
Sarli Family Foundation
Sherman Family Fund

\$25,000-\$49,999

The Ronald D. Deffenbaugh
Foundation
Gattermeir Family Foundation
The McGee Foundation
Page & Bruce Reed

\$15,000-\$24,999

Ina Calkins Trust, Bank of
America, N.A., Trustee
J.E. Dunn Construction Company
Falling Forward Foundation
Garmin
Haverty Family Foundation Fund
R.C. Kemper Charitable Trust,
UMB Bank, N.A., Trustee
Frank and Margaret G. McGee
Charitable Fund
Mercury Club of Kansas City
Bonnie & Douglas Pearson
Vivian & Hymie J. Sosland
Charitable Trust

\$10,000-\$14,999

The Able Gamers Charity
BlueScope Steel Foundation
The Breidenthal-Snyder
Foundation, Inc.
Children's Mercy Hospital
Brett & Alex Elliott
Gregory E. Gille
Hartley Family Foundation
Kirk Foundation
Kross Family Fund
Richard H. & Charlotte G. Orear
Charitable Foundation
Shamrock Hills Inc.
Sunderland Family Fund
Curt Wardlow

\$5,000-\$9,999

Altec Industries
Blue Cross and Blue Shield
of Kansas City
Peggy & Michael Borkon
Capital Electric Construction Co., Inc.
John P. Deckert
Linda H. Dieffenbach
Bill H. Dunn, Sr.
Executive Functions
Management, Inc.
Mary Fisher

Peter Gattermeir
David T. Hunt
Graham Hunt
John T. Jackson Foundation
Dr. Robert & Linda Jackson
KBP Brands
William T. Kemper Charitable
Trust, UMB Bank, N.A., Trustee
Jean T. Kiene
Owen Kross
The Lewer Companies
Lockton
Mariner Foundation
The McDonnell Foundation, Inc.
Netsmart
Matthew & Wendi Nichols
John J. and Barbara J. O'Donnell
Family Foundation
Oppenheimer & Co., Inc.
Cappy & Peter Powell
Lindsey Roy & Aaron
Eusterwiemann
Jeffrey Schmid
Seaboard Corporation
Shamrock Trading Corporation
Susan & Tuck Spaulding

2,500-\$4,999

Austin Tile, Inc.
Blue Ridge Bank & Trust Co.
Amy & Michael Castillo
CBIZ
Commerce Bank
Edward Connor
Katherine DeBruce
William & Jill Esry
Geiger Ready-Mix Co., Inc.
GFI Digital, Inc.
Great Plains Trust Co., Inc.
Hallmark Corporate Foundation
Whitney & Patrick Hosty
Imo's Pizza
Intercontinental Engineering
Manufacturing Corporation
John Larson
Lloyd Jay Lazarus
Timothy J. Link
Major Painting
Mark Meisel
George & Babs Morris
Pendello Solutions, Inc.
Recreation Wholesale, LLC
Randy Spalding Excavating, Inc.
Spirit Marketing
Stinson LLP
Jared & Terra Stricklin
Debbie D. Westlund

\$1,000-\$2,499

1248 Foundation
Ability KC Auxiliary
American Century Investments
Apree Health
Archer Education
Deborah Ashby
Atterbury Family Foundation
Bally's Kansas City
Balocca-Clemens Family
Charitable Trust
bcDESIGNGROUP
Matt Begnoche
S. Frazier Bell

BOK Financial
Russell & Carol Brumbaugh
Catalent Pharma Solutions
CBRE
Suzanne Clarke
Jim & Nancy Clay
Columbia Capital Management, LLC
The Communications Network
Rebecca Coulson
Peggy & Terry Dunn
Sherry L. Early
Leigh Eck, M.D.
James Elliott
Doug Elmer
EPR Properties
Chris Figge
Sara Gude
Brock Guernsey
Donald J. Hall, Sr.*
Brad & Andrea Hamilton
Hanger Clinic
Chris & Sarah Happ
Lucas Harris
Peggy Harris
Shirley & Barnett Helzberg
Leslie Hoffecker
Mary & John Hunkeler
Hunt Midwest
Imaging for Women, LLC
The Jager Family Foundation
Niles Jager
Linda Jordan
Trina Kahl
Jennifer Kanning
John & Janice Kelble
KeyBank
Frederick M. Lambert
Eric Long
Dr. Siabhan May-Washington
Susan L. Mayer
Connie Marquetta Riggs
Annie McMillan
Mid-America Regional Council
Kathleen Missman
Kathleen Moore
William A. Muir
Terence Oliver
P1 Group, Inc.
Jayme Paul
PCRE Restaurant Group LLC
John Pearson
Margaret & Keith Pence
Peterson Manufacturing Company
Polsinelli PC
Fred Pryor
Marsha E. Reese
Ronald Reetz
Robert D. Regnier
Ora Reynolds
Delano Ricket
David Ross
Jordan Scafe
Michael & Cathy Schultz
Diane & Stuart Sharp
Sosland Companies, Inc.
Beth Soukup
Brad Steinle, M.D.
Chris Storms
Superior Services of Kansas City, LLC
Union Station Kansas City
The University of Kansas
Health System

David Voorhees
Julie & David Warm
Jeff T. White
Adam Winzenried
Henry E. Wurst Family Foundation

\$500-\$999

Michele Ahern
Richard O. Ballentine
Jim Baumann
Chris Bieberly
Joan Bishop
Erice & Diane Bonner
John Boushka
Barrett & Cherryl Brady
Harriet R. Brazil
Bri-Zel Trucking LLC
Buttonwood Financial, LLP
Caymus Partners
Allen & Kim Chazelle
Frank J. Cindrich
John M. Cindrich
Company Kitchen
Susan Cox
Erika Dickey
Steven Doepke
Jerry Elarton
Felicia Green
Brian & Celeste Greenlee
Hearst Television Inc.
Aleta Hubbard
Rhonda Hyer
Gary & Joy Jones
Blythe Launder
Vicky Leonard
Daniel Looney
Dan LoScalzo
Al Mauro, Jr.
Nanette Maxwell
Midwest Adaptive Sports
Mary Lynn Mikhail
Steve & Sharon Mohler
Brynn A. Morris
Multivac Inc.
Karen Diane Neighbor
Steve & Marianne Noll
Numotion
Linda & Jim O'Neill
Sterling Ozark
Philip Paschang
Andrew Petersen
Leslie Pfriem
Todd Reiser
Denise Rosier
Lisa Schellhorn
David & Katherine Schukai
Barbara Schulte
Nate Shada
Brendan Smith
Leo Stone
Allison Tapko
Randy & Leslie Trammell
Jennifer Tran
VMly&R Foundation
Tom Walton
Kyle Webster
Marc & Gloria Wolfe
Jeffrey Yeager
Kenneth Zelig

*Deceased

KMBC 9 CARES FOR KIDS

In 2024, Ability KC was honored to be selected as a partner in the KMBC 9 Cares for Kids initiative. Through the "Thriving with Therapy" campaign, generous community support helped expand access to life-changing therapy for children with disabilities.

- Raised over \$36,000 to support uninsured and underfunded therapy services.
- Delivered more than 200 therapy sessions to children with complex conditions and diagnoses.

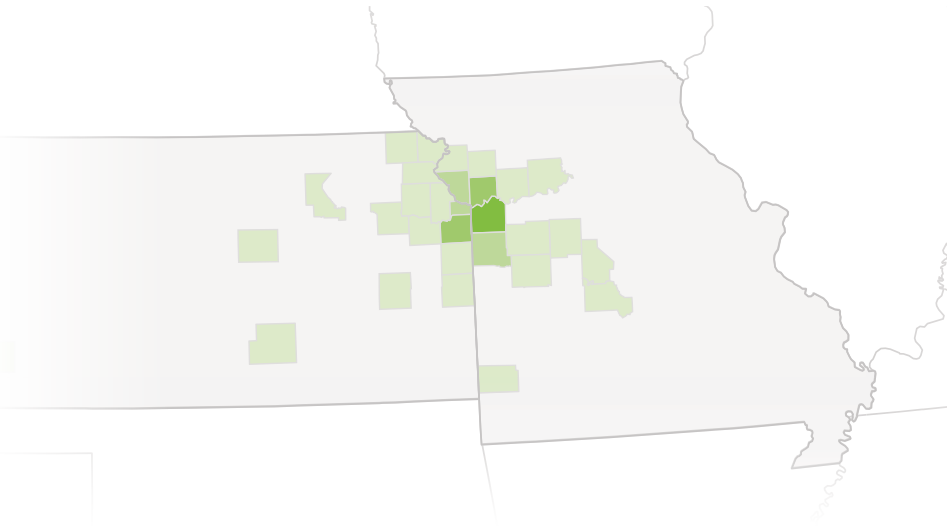


Ability KC currently partners with more than 300 community partners and providers.



A CENTER OF EXCELLENCE, BRIDGING ACROSS COMMUNITIES

In 2024, Ability KC served individuals across multiple states, with **39% identified as low income**. We partnered with **more than 20 colleges and universities** to support allied health rotations and academic research, offering assistance with capstone projects, publications, and internships. Overall, we supported **more than 80 college students**, reflecting our dedication to education, innovation, and workforce development.



**Become a Champion | Volunteer | Donate
Sponsor | Join Our Team**

ABILITYKC.ORG



Get involved!

Join us to continue the positive impact in our community
and in the lives of many, next year and beyond.

ABILITY^YKC[®]